



Common Indicators

Healthcare provision in cases of **gender violence** in the National Health System

General Objectives

Based on the proposals that have been developed and reached by consensus within the Commission Against Gender Violence of the National health System's Interterritorial Council (NHSIC), the **Common Indicators of Gender Violence** have been put forward that will give us a clearer picture of the real extent and consequences of gender violence on health and on the healthcare system.

They have been created in compliance with the measures and proceedings laid down in the Organic **Law of 1/2004, on Comprehensive Protection Against Gender Violence** concerning the healthcare Services and within the conceptual framework and guidelines for intervention proposed for all public administrations in the National Plan for Awareness and Prevention of Gender Violence.

Specific Objectives

- Facilitating the planning of the healthcare provided in cases of gender violence once both its extent and the characteristics of women suffering it are known.
- Promoting the improvement of quality and equity in all healthcare services provided to victims of gender violence by means of an assessment on the impact of initiatives undertaken by healthcare administrations, especially those related to the Common Protocol.
- Favouring cooperation and exchange of experiences and good practices among administrations involved in the healthcare dispensed to women who undergo violence.

Common Indicators

Extent

1. Cases detected per 100,000 women over 14 years of age.
2. Number of grievous bodily harm forms issued.

According to level of care and source

3. Cases detected at Primary Care.
4. Cases detected at Specialized Care.

According to type of maltreatment

5. Cases detected as per maltreatment type.
6. Cases detected as per duration of maltreatment.
7. Cases detected as per cohabitation with the maltreater.

According to personal particularities of the maltreated woman

8. Cases detected as per age.
9. Cases detected as per nationality.
10. Cases detected as per job situation.
11. Cases detected among pregnant women.
12. Cases detected among handicapped women.

According to characteristics of type of care received

13. Women cared for, having received information and support from social and healthcare resources.
14. Women cared for, having been assessed in terms of risk.
15. Women cared for, for whom a security plan has been devised.
16. Cases detected referred to Primary Care.
17. Cases detected referred to Specialized Care.
18. Cases detected referred to Social Care Services.

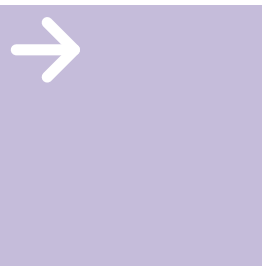


Consejo Interterritorial
SISTEMA NACIONAL DE SALUD

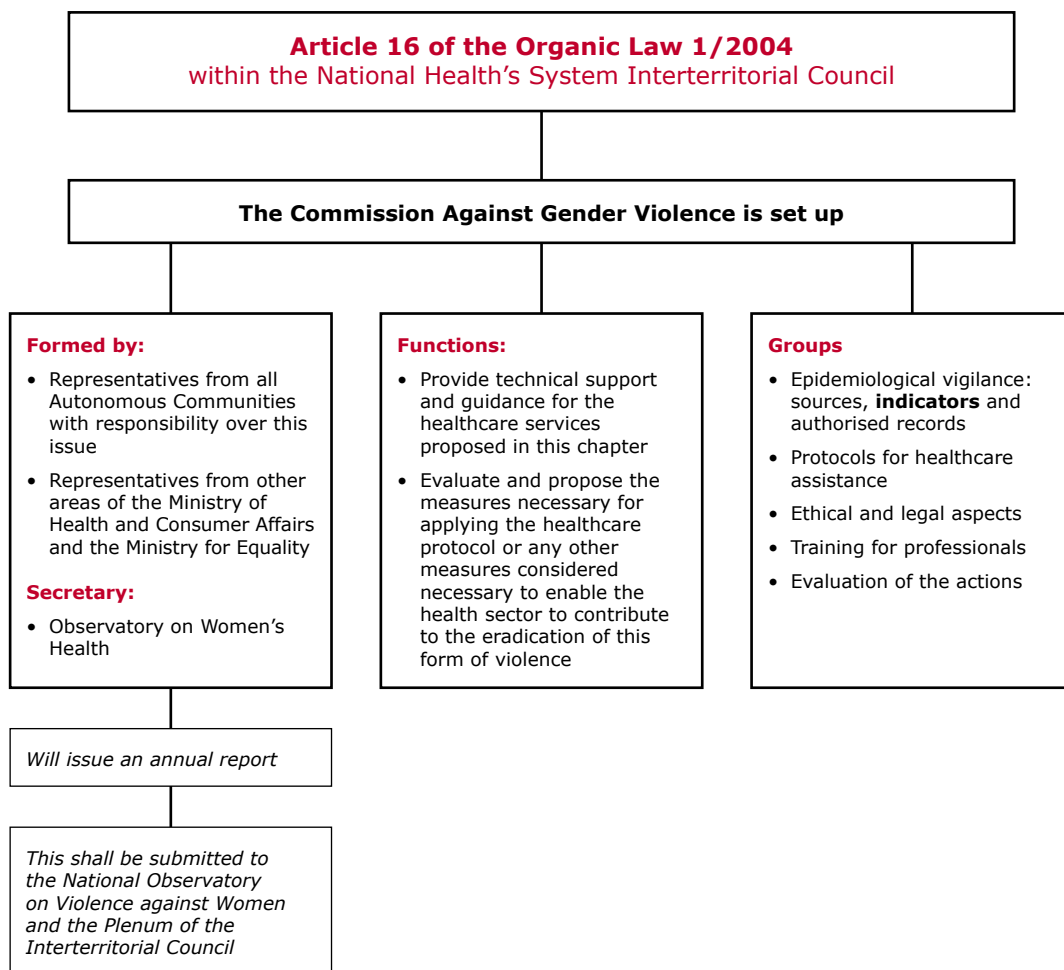


Case Definition

Woman over 14 years of age having been treated by the healthcare system who for the first time admits to having been maltreated.



Common Indicators



Consejo Interterritorial
SISTEMA NACIONAL DE SALUD



Elaboration:

**Commission Against Gender Violence of
the National Health System's Interterritorial Council**

Commission Secretary:
Observatory on Women's Health

Paseo del Prado, 18-20, 16.ª planta - 28071 Madrid
Tel. +34 915 961 980 - Fax +34 915 961 135
participaosm@msc.es
www.msc.es/ObservatorioSaludMujer

